
From: Metris <metris@metris.co.nz>
Sent: Wednesday, 12 October 2022 2:47 pm
To:
Subject: Metris Weather Outlook October 2022

Metris Update and Weather Outlook.



October Weather Outlook

Maps and Images not showing?

[Click Here](#)

Climate Settings

The atmospheric circulation is consistent with the La Niña. However, there are indications the La Niña phase is easing slowly. The La Niña seems likely to weaken over the summer months towards neutral conditions.

The negative Indian ocean dipole is weakening.

There should be an easing of rainfall in the west of the South Island. The upper North Island will ease more slowly due to the warm ocean area that sits to the North-West and North of New Zealand.

Key take outs for growers:

- La Niña easing to neutral over the next 3-4 months – with frequency of North-Easterly rainfall events lessening over that period for most of the country

- Generally more settled weather as Summer establishes with highs playing a more dominant role

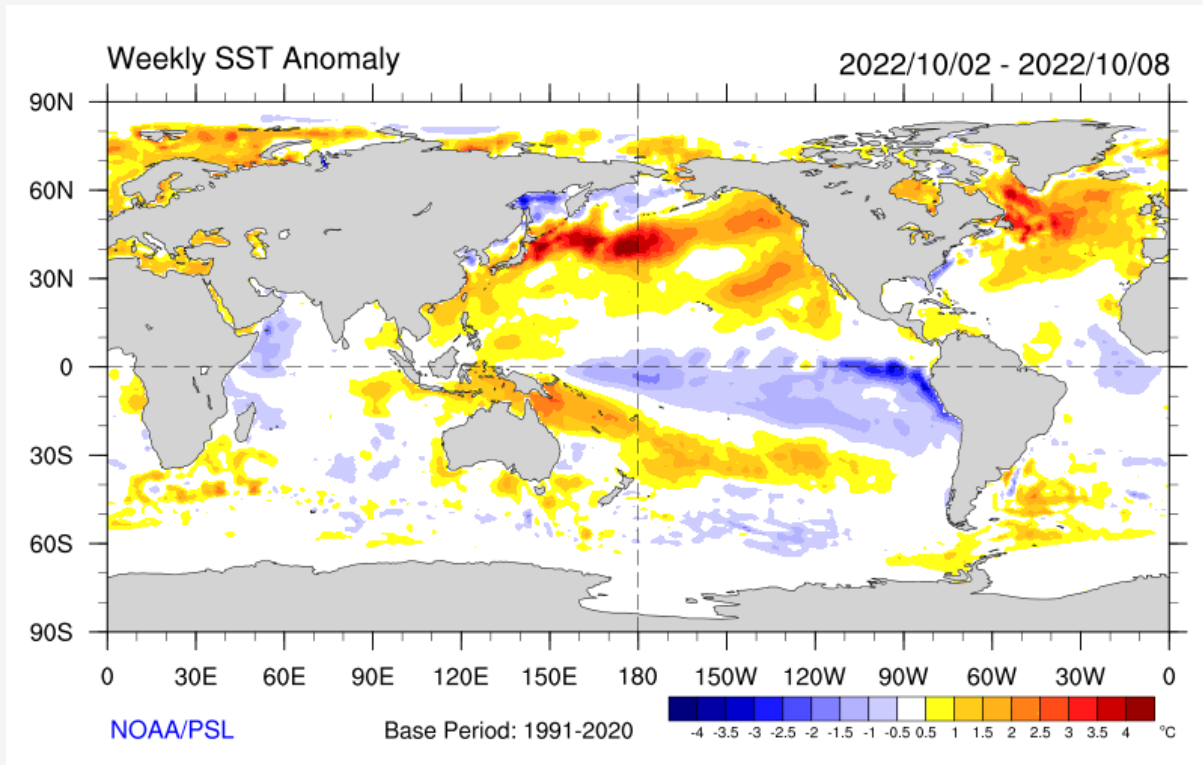


Image courtesy of NOAA / Earth Systems Research Laboratory



Impacts of a wet season for growers

Rainfall in the past month has been acutely felt across the Hawke's Bay and Bay of Plenty growing regions.

The weather pattern over the past 6 weeks has seen systems of rain coming through every 7-10 days, regularly depositing 30-50 mm (or more) of rain.

There is conjecture surrounding whether we are experiencing the very rare occurrence of a triple-dip La Niña.

In a classic La Niña New Zealand tends to get lower rainfall with pulses of rainfall from the MJO

developing out of the tropics moving from West to East on a 30-60 day period. This convective activity feeds off the warmer waters bringing us rain.

But these lows we have experienced have been coming onto the country more regularly through the winter. This is due to an anomalous warm tongue of water around New Zealand which is creating a ribbon of moisture which combines with a tropical North Westerly exit jetstream to produce these regular lows.

We see this weather pattern easing off over the coming months. But we are looking toward summer cyclones – we had 2-3 cyclone events last year – and when the data is available in November we will have a clearer idea of their likely frequency for Summer.

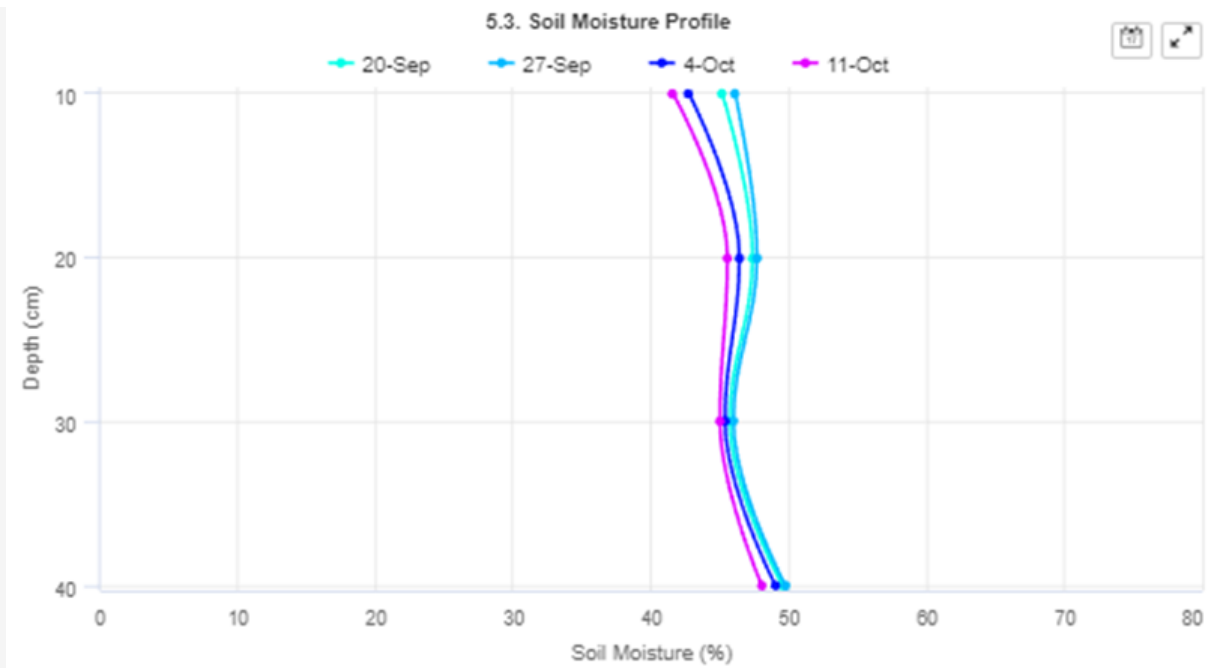
Soil moisture is available at depth even in the Central Hawkes Bay (see image below) as readers of our daily forecasts will observe from our regional weather stations.

We're also seeing the effects on the ground as Mark and Chris are servicing and upgrading our stations and chatting with you about the challenges of getting machinery into orchard to carry out essential work.

Apple growers have been struggling in the Hawke's Bay and Nelson regions as they can't get sprayers through orchards due to the mud, and as spray windows for fungicides have been reduced.

We have heard that picking early-season Avocados through August and September has been especially problematic with orchards particularly wet, muddy and with trees vulnerable to the effects of heavy machinery under these conditions. Growers will be looking to improved drier forecast weather conditions for the peak season in January and February.

Vegetable growers are also hampered by the wet, with heavy soils set to make tough work of the Asparagus harvest through the Hawke's Bay and Waikato as their crops reach peak conditions over the next month.



Current Weather Pattern

The warm wet conditions over the North Island are likely to persist over the next month.

The high pressure is likely to have an increasing influence on this pattern.

High pressure moving to the East of the North Island will create short-term blocking events.

Current situation for growers:

- Blocking weather pattern likely to lift average air temperatures
- The easing in La Niña will take time to reduce the particularly wet conditions experienced to date



Regions

Summary

Upper North Island sees a continuation of heavy rain events from Tasman, NW Tasman persisting. This eases into the Summer with increased risk of cyclones as we move into the Summer period later.

The lower South Island and West Coast is likely to be under the La Niña circulations and the NE flow will see drier than normal conditions develop.

Northland, Auckland, BOP, Waikato and Central NI – Above normal rainfall, warmer than normal

Gisborne and Hawke's Bay – Above normal to slightly above normal rainfall, warmer than normal

Wairarapa – Slightly above normal rainfall, warmer than normal

Taranaki, Central North Island – Slightly above to above normal rain fall, warmer than normal

Nelson and Marlborough – normal rainfall, above normal temperatures

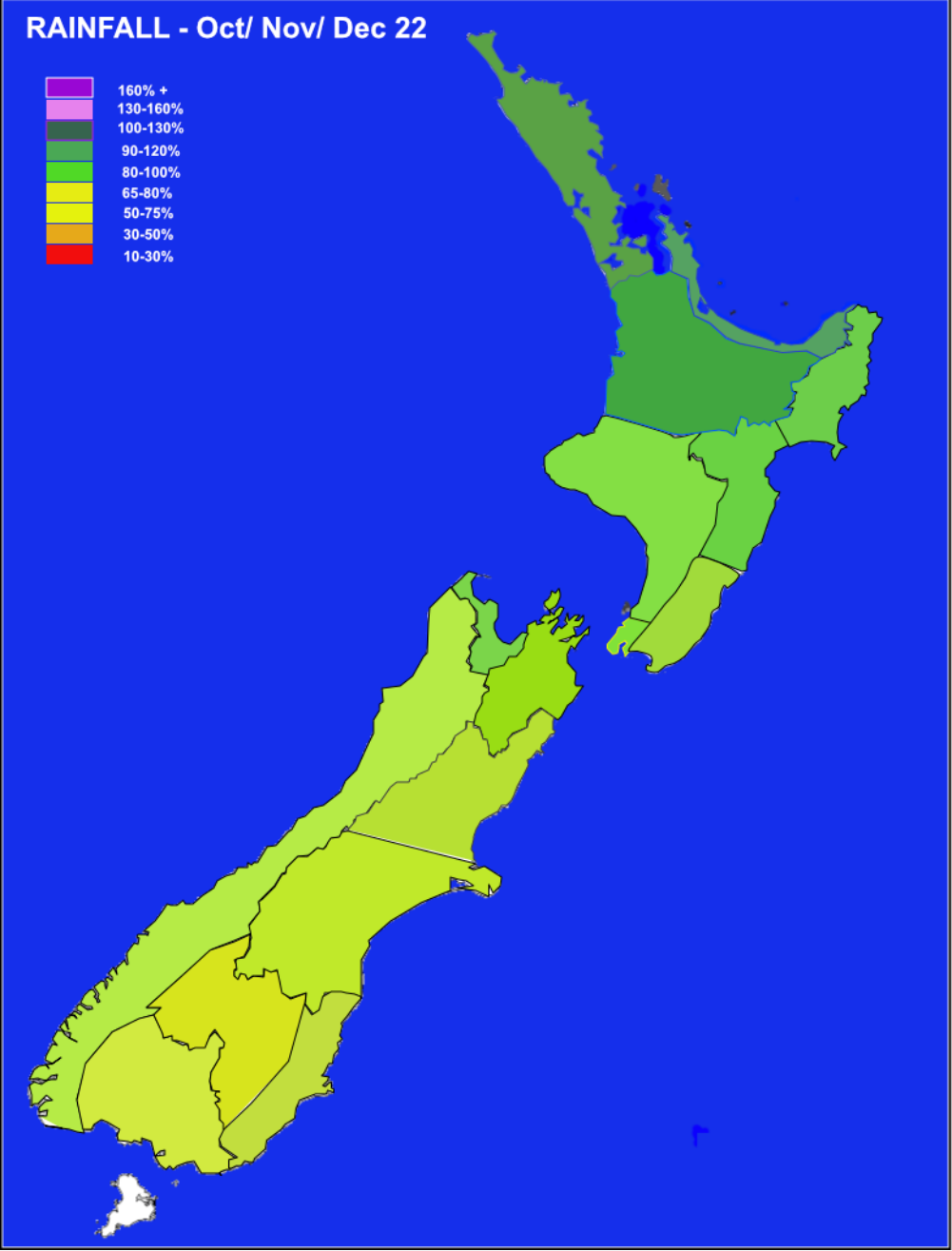
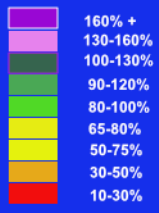
Canterbury, coastal Otago – Normal to slightly below normal rainfall, above normal temperatures

Southland, Central Otago, Westland – Slightly below normal rainfall, above normal temperatures

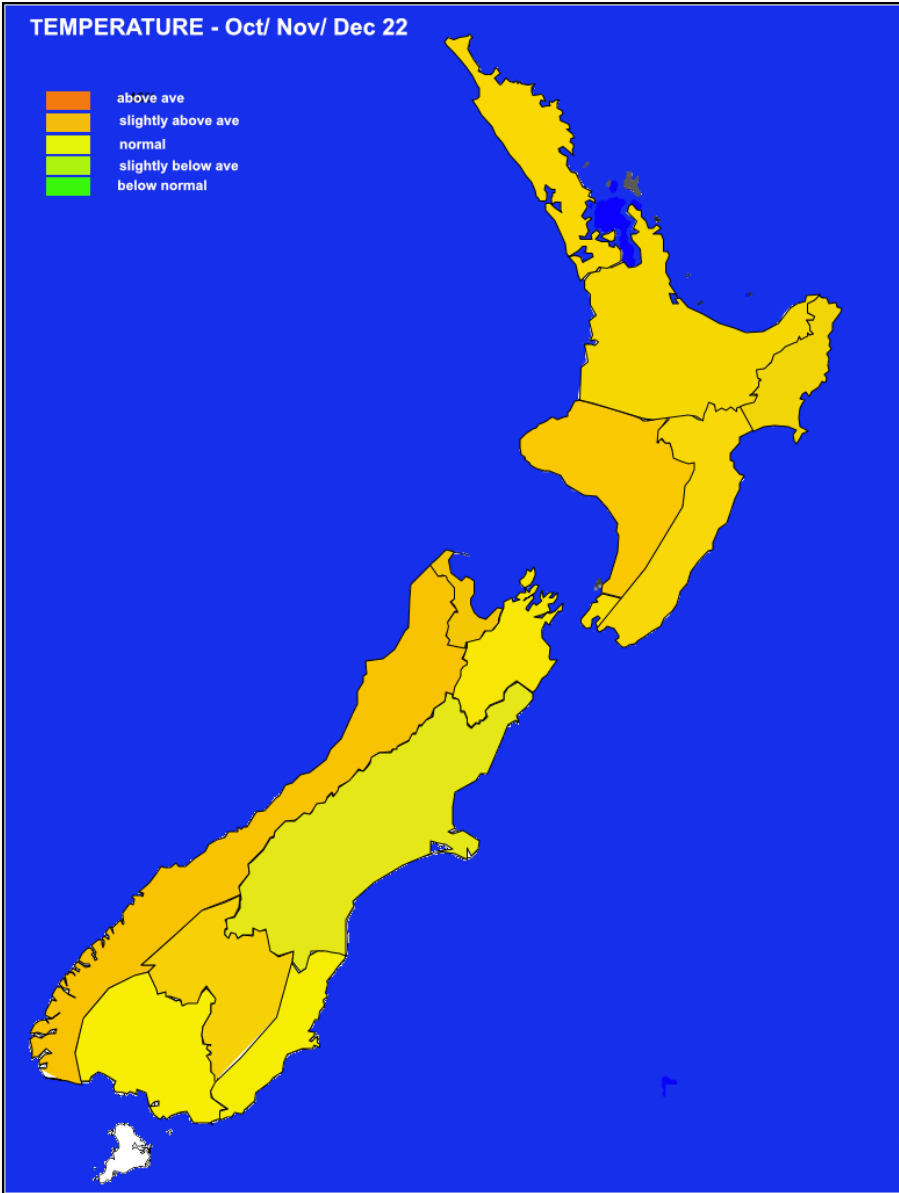


Rainfall and Temperature Maps

RAINFALL - Oct/ Nov/ Dec 22



TEMPERATURE - Oct/ Nov/ Dec 22



Contact Us

T: 0800 372 433
E: hello@metris.co.nz
www.metris.co.nz

HAWKES BAY - GISBORNE - AUCKLAND - WAIRARAPA - BAY OF PLENTY - WELLINGTON - NELSON - MARLBOROUGH - CANTERBURY - OTAGO

[Click here to unsubscribe from these emails](#)